



JUDGES' COMMENTS

“The builder has done an excellent job, developing a purpose-built structure to suit the requirements of the fire station both now and in the years to come. The building incorporates training rooms, accommodation facilities and excellent changing rooms – essentially everything a fire service requires, and more.”

Hot property

Paraparaumu’s new firehouse burns up the competition

The first new fire station built on the Kapiti Coast in 50 years has established a benchmark for the stations of the future.

Despite extreme weather delays, Armstrong Downes, main contractor for the \$2.6 million, 1130sq m building, delivered the project on budget and within the tight construction timeframe of 28 weeks.

Weather and close proximity to the sea were key considerations for architect Andrew McNally, who chose 125mm exposed aggregate panels, Stevenson’s honed dry blocks and zinc cladding for their resilience and durability.

The station is one of the first in New

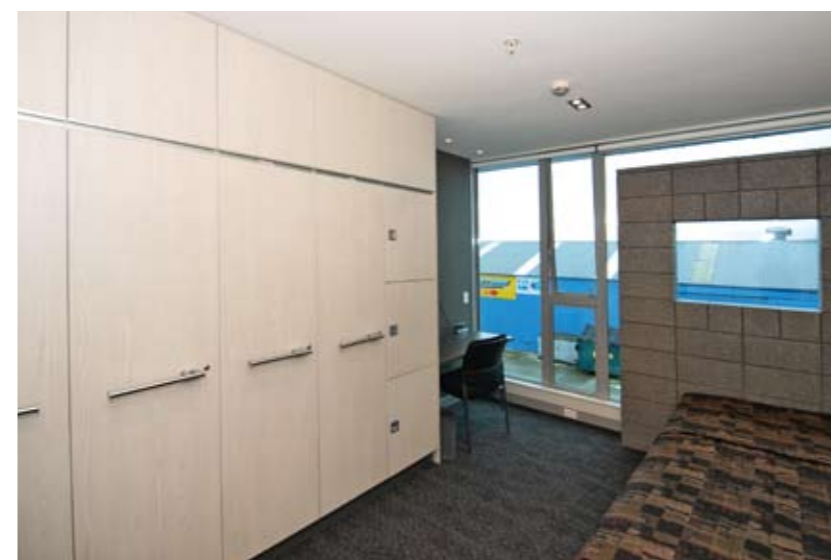
Zealand equipped with advanced technological systems that improve call-out efficiency, ‘grey water’ recovery and through the use of a targeted fume extraction system, help eliminate diesel emissions from the fire appliances.

As a leading construction company serving the greater Wellington region, Armstrong Downes has a reputation for delivering projects on time, to budget and with no fuss. They attribute the success of the Paraparaumu Fire Station to smarter building practices and the importance of efficiency and sustainability in today’s design and construction techniques.

Tony Doile, Director of Armstrong

Downes, says “Although we are well known for ‘big box’ construction, this award is recognition of our ability to build specialised community facilities requiring a high level of detailed finishing.”

Greater director involvement at an operational level ensured Armstrong Downes had daily contact with the New Zealand Fire Service and architect during construction to ensure any issues were identified before they became problems. This teamwork has delivered a quality, innovative product to the New Zealand Fire Service and will benefit the Kapiti community for years to come. ●



Armstrong Downes Ltd

ph 04-566 8566, mob 027-418 2416
admin@armstrongdownes.co.nz
www.armstrongdownes.co.nz



Armstrong Downes Ltd
CONSTRUCTION AND PROJECT MANAGEMENT